

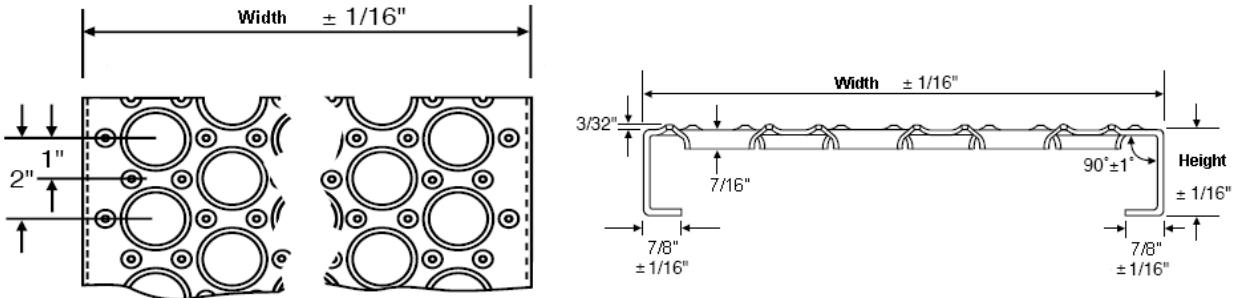
C.W. CARRY LTD.

STEEL SERVICE CENTRE

AND STRUCTURAL STEEL FABRICATOR



Shur Grip Safety Grating



Round hole Shur Grip—Galvanized Steel

Width	Core Nom Thickness	Channel Depth (height)	Weight		Width	Core Nom Thickness	Channel Depth (height)	Weight	
			Lbs/lin ft	Lbs/sq ft				Lbs/lin ft	Lbs/sq ft
5"	13 GA	1 1/2"	2.6	6.2	12"	13 GA	1 1/2"	4.4	4.4
5"	13 GA	2"	2.9	7.0	12"	13 GA	2"	4.6	4.6
7"	13 GA	1 1/2"	3.0	5.1	12"	11 GA	1 1/2"	5.4	5.4
7"	13 GA	2"	3.4	5.8	12"	11 GA	2"	5.5	5.5
7"	11 GA	1 1/2"	4.2	7.2	12"	11 GA	3"	6.2	6.2
7"	11 GA	2"	4.6	7.9	18"	13 GA	1 1/2"	5.7	3.8
7"	11 GA	3"	4.8	8.2	18"	13 GA	2"	6.0	4.0
10"	13 GA	1 1/2"	3.5	4.2	18"	11 GA	1 1/2"	6.8	4.5
10"	13 GA	2"	3.9	4.7	18"	11 GA	2"	7.1	4.7
10"	11 GA	1 1/2"	4.6	5.5	18"	11 GA	3"	7.9	5.3
10"	11 GA	2"	4.8	5.8	24"	13 GA	2"	7.2	3.6
10"	11 GA	3"	5.2	6.2	24"	11 GA	2"	8.9	4.5
					24"	11 GA	3"	9.8	4.9

- Manufactured from pre-galvanized steel (Z275(G90)). Inquire on alternate material such as Stainless Steel (304,316) and Aluminum (5052 H32).
- Available in 12'-0 lengths. Inquire on cut to size availability.
- Load charts available by request.

Disclaimer : Not all Shur Grip sizes listed are available from stock. The list above represents some of the common Shur Grip sizes that have been or are still produced by specific Mills worldwide. Availability of any size should be confirmed before using in any design specs.